

LT26-FNP5

The Determinants of Access to Healthcare Services: A Cross-sectional Study among Women in Mymensingh, Bangladesh

Rashed Hossain^{1*}, Jannatul Ferdous Tora¹

¹ Department of Sociology, Jatiya Kabi Kazi Nazrul Islam University, Trishal, Mymensingh-2224

Presenting Author: Rashed Hossain

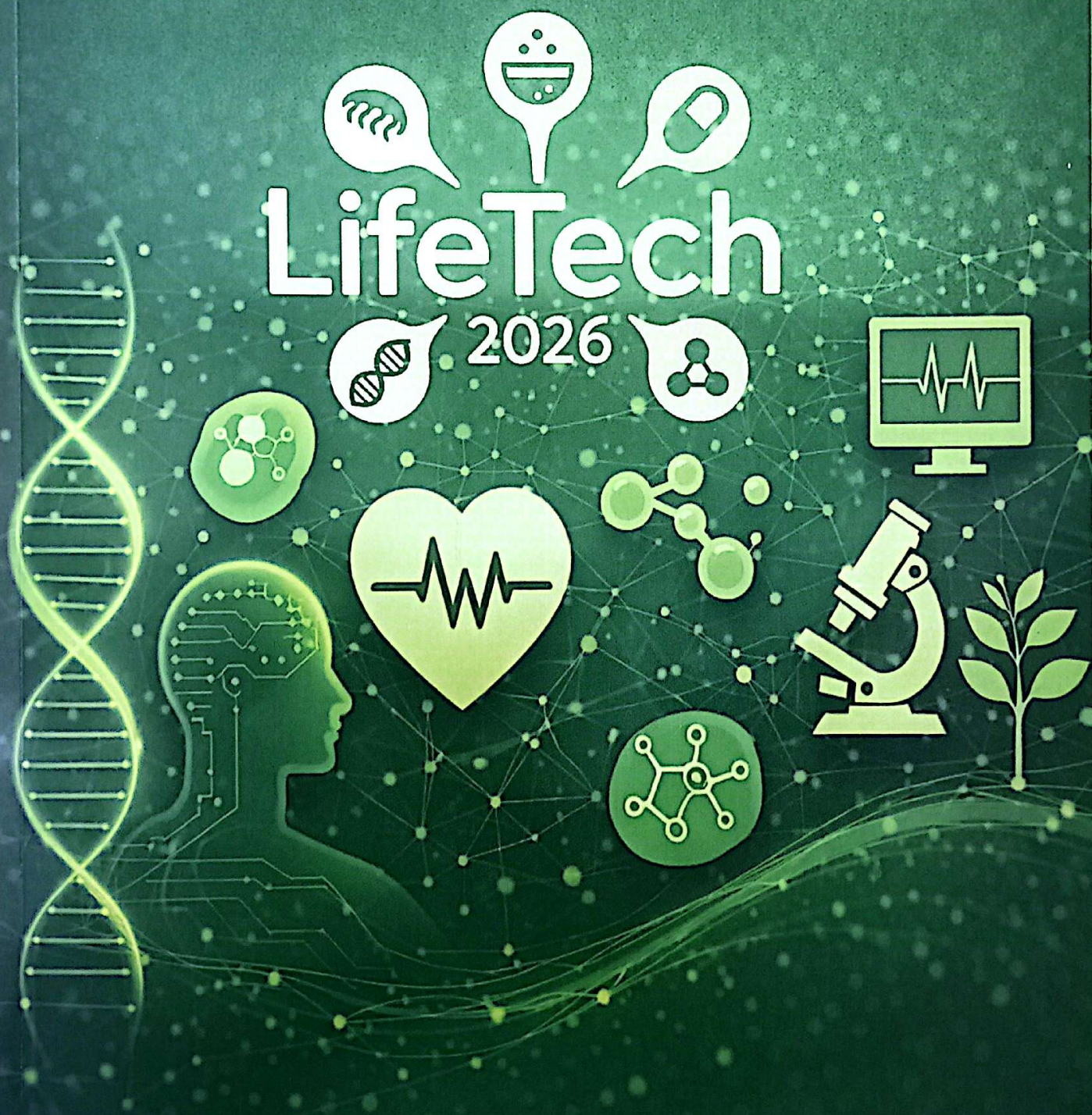
Corresponding Author: hossainrashed47@gmail.com

Equitable access of healthcare services is a significant concept to ensure the health rights properly. This current study aimed to identify the pattern of access to healthcare services as well as examined the influences of socio-demographic characteristics on access to healthcare services. A cross-sectional quantitative study was employed and 385 female respondents were chosen for data collection in Mymensingh district. The current study used identical dimensions including acceptability, availability and accommodation, and affordability from both Penchansky and Thomas's framework and Levesques's framework to determine the access to healthcare services. Frequencies, percentage, mean, standard deviation as well as ANOVA and T-test were performed to complete data analysis using SPSS version 25. The findings revealed that over the half of the respondents (54.1%) perceived that necessary health services were provided at the health center along with three quarter of the respondents (75.4%) thought that health center had all the facilities. The findings of the study also revealed that 63.7% of the respondents believed that the ratio of health staff and client was appropriate and around 6 out of 10 of the respondents thought expected time were fulfilled in the health center. 144 respondents (37.40%) had higher access, although only 7.79% respondents had medium access. The findings of the study also discovered that widowed (mean \pm SD = 66.49 \pm 9.418), urban people (mean \pm SD = 69.69 \pm 6.914), post-graduated patient (mean \pm SD = 71.00 \pm 5.948), employed (mean \pm SD = 67.17 \pm 7.480), upper class (mean \pm SD = 66.52 \pm 8.181), private hospital's patient (mean \pm SD = 65.39 \pm 9.031), and indoor patient (mean \pm SD = 65.25 \pm 7.953) were more perceived access to healthcare services than others. The health ministry and relevant authorities should take initiatives to make healthcare services more accessible and convenient for the patient.

Keywords: Bangladesh, Indoor treatment, Outdoor treatment, Patient, Perceived access to healthcare services.

1st International Conference on Life Science, Health, and Biotechnology

LifeTech 2026



Organized by
Faculty of Biological Science and Technology
Jashore University of Science and Technology

Book of Abstracts

Innovating Today for a Healthier Tomorrow